

# West Hagbourne *newsletter*

February 2005

Vol 2005 Issue 62

## Didcot West now *goes to appeal*

George Wimpey and Bryant Homes have now appealed to the Planning Inspectorate over the delay by SODC in determining a decision over the application to develop the area described as Didcot West. The Parish Council has submitted their response to the these two appeals.

Again objections have been raised on behalf of West Hagbourne relating to the severe negative impact this development will have on our village. If approved, the plans will erode the rural gap between the village and Didcot. Traffic flows and pollution within the village will be substantially increased and risk of flooding increased. There are serious infrastructure failings in the plan covering roads, transport and education. The government's stated objective of preserving the best and most versatile agricultural land has been ignored.

The Parish Council is in close touch with the Keep Harwell Rural Campaign, the Campaign for a Sustainable Didcot and the neighbouring Parish Councils of Upton and Didcot. We are doing all we can to make everyone's views known and to influence, as far as possible, the outcome of the Planning Inspectorate.

Copies of all the Parish Council's successive submissions opposing these plans may be obtained from the Parish Clerk.

## all that effort - *for two white lines*

After almost eighteen months of pressure by the current Parish Council, and years of previous Council's efforts, something has happened by Green Thatch.

Two white lines have been painted on the road, in an attempt to encourage drivers to give way and only have one vehicle use the space at the same time. Two new warning signs have also been added, showing single file traffic ahead.

It does not seem to have helped reduce the number of heavy goods vehicles that insist on flaunting the restriction, and are most frequent when there is some sort of incident on the A34 or the Milton approach road. Regulations do not permit a proper priority system that gives precedence to traffic from one direction because of line of sight issues as laid down in highway regulations.



### *in this issue*

web develops

New planting

Annual Parish Meeting

SEERA consults

Planting plans

Parish Council news & update

WANTED new Parish Clerk

Make sure you fill in the *Parish Plan Questionnaire* - it will help ensure your views are taken into account in the future

# Parish Council report

The Parish Council last met on the **11th November 2004** at Hagbourne School and the meeting was attended by three parishioners - Betty and Ted Kendrick, John Thornhill

The Open Forum discussed

## **Bus Tokens**

Keith Little queried why people resident in Didcot receive a higher value of bus tokens than those living in West Hagbourne. He reported five people had spoken to him about this.

For the PC to do something similar we would need to increase the Precept – by up to £700. This will be placed on the Agenda for the Annual Parish Meeting.

## **Traffic through village**

John Thornhill was concerned over the increase in the volume and speed of traffic through the village and asked if there are plans for 'traffic calming' - and could we ask the Police to direct traffic calming exercises? He was particularly concerned with some drivers who race along the short straight stretches of Main Street.

Phil Taylor replied continuous and persistent demands have been made to Highways for some form of traffic calming through all Main Street and in particular the narrow section. Discussion followed on signage, humps, chicanes and allocation of funding.

It was agreed to approach the Police to ask if they can arrange a check on speeding through the village. Need to give busiest time for volume and speed of traffic.

It is predicted that the Didcot Development will increase the flow of traffic through villages.. A possible solution is a By-Pass.

**update** Main Street now has signs indicating 'road narrows' and road markings extend from the pond to 'Green Thatch' aimed at encouraging single file traffic.

**Patrick Greene** - our local and district Councillor raised the following: CCTV in Wallingford and Henley, answered why many houses didn't get Xmas recycling sacks, possible Green Waste improvements, and Structure Plan 2016 / Structure Plan 2011 progress. SODC appear to be reconsidering their provision of green waste - which could include a change to the green bags scheme, as currently these are dumped directly into landfill. We will advise you of any changes to these arrangements

## **Planning applications**

Permission was granted by SODC for one dwelling at **Ash Farm** and an extension at **6 York Road**.

**Didcot Development** – proposed development of land to the west of Didcot – A4130 Park Road to both north and south of B4493 Wantage Road. Has been lodged at Appeal because of failure of SODC to determine a planning application within the time allowed

Appeal reference – APP/Q3115/A/04/1168356

The Parish Council agreed to respond in writing to the planning inspectorate.

No progress to report on planning applications made by Thatch Cottage, Moor Lane or Ivy Cottage, Main Street

SEERA will be consulting on even more houses in Didcot.

## **Village maintenance**

Adjacent land to Horse and Harrow – not yet taken forward

Bus shelter garden – has been well pruned, tidied and cleared by the gardener.

**Bus shelter roof** – 3 quotes have been submitted. The Council unanimously agreed to allocate £1500 to meet costs of replacing the roof and guttering.

Previously the Village History Group had offered contributions to this sort of expenditure - it was agreed to ask if the Village Association would like to contribute as well.

The clerk will also check with Conservation dept for any advice on possible grants for this work.

## **Trees, shrubs and flowers**

A comprehensive survey of the village, by Sue and Marion, has been made for planting sites for trees and mixed natives. Information about free trees on offer from Adam Dawson of SODC have been given. MJ requested finance for self watering pots for either side of bus shelter – agreed.

It was suggested that the existing budget is used to provide additional colour at various points around the village. With an emphasis on residents taking responsibility for individual sites - volunteers sought, ideas welcome.

## **Foxglove Lane and Church Path**

Condition of both paths and the need of maintenance has been brought to the attention of Brian Short, Highways dept, at OCC. And it was agreed to ask Sustrans if they could help improve this link to their trail.

Large Farm vehicle movements have made the path very muddy and difficult to negotiate on a bike or on foot.

**Grass cutting** – agreed to consider Isis Accord again – clerk to check new contract price first.

## **Parish Plan**

The plan questionnaire is printed, bound and ready for distribution – in early February. One copy per household but each copy can show the views of up to 6 people.

There is a special section for the 5 – 17 year olds. And a raffle ticket will be exchanged for each completed questionnaire – to be drawn at a later date for prizes of £20 and £10. Please make sure you take part -

## **Future meeting dates were agreed**

- Annual Meeting of the Parish Council **21st April 2005**
- **Annual Parish Meeting 21st May 2005**
- Future meetings of the Parish Council to remain on the 2nd Thursday of alternate month.
- 

**next Parish Council meeting – 10th March 2005**

## Parish Clerk *retires*

After many years of service *Ruth Clerk* has given notice that she wishes to retire from the post of Parish Clerk.

We formally thank her for the help and assistance given over the past years and appreciate her intentions to help with the transition to a new clerk.

*Is there anybody in the parish who would be interested in taking on the duties of the Parish Clerk?*

If you would like to be considered for the post, you will need to be computer literate, as much of the Parish Council business is now communicated using email. You will also need some space to hold the records and day-to-day paperwork of the Parish Council. The Parish Council normally meets every other month and you will need sufficient time to co-ordinate things like the newsletter plus the distribution and correspondence for five councillors.

To be considered for the post please contact Phil Taylor - by phone or email, details on the back cover

## *dial a ride* scheme

Don't forget the bus service for the elderly or disabled, specifically for those who find it difficult to use conventional public transport has been launched in South Oxfordshire - it started on 15th November

Full details, including membership leaflet, is available from local libraries, centres etc or by phoning **01869 327048**

## *bus tokens*

At the last Parish Council meeting - Keith Little queried why people resident in Didcot receive a higher value of bus tokens than those living in West Hagbourne. He reported five people had spoken to him about this.

The value of bus tokens for distribution is decided by the District Council.

In South Oxfordshire all villages receive £20 per year but residents of Didcot receives £30.

The Vale of White Horse District Council allocates £29 a year to residents living in towns and £31 to those living in a village.

## *a brighter village...*

The garden by the bus shelter is looking much tidier now that Richard Evans has been contracted to keep it that way. It has been suggested that we remove the privet in the middle of the garden and replace it with another shrub that gives us some bright colour through the year.

The mahonia in one of the pots was dying and this has been transferred to the back of the rose bed in the hope that it will revive. Once the other mahonia has grown too big for its pot that can be moved into the garden too.

People have less time to water and tend the bus shelter pots these days so it has been proposed that the current stone pots are moved elsewhere and replaced with slightly larger pots (stone again to avoid theft) containing a self watering device (ideas please!) as the current pots become very dry in summer and annuals suffer.

*What do you think about more planting?*

A suggestion has been made that we could introduce more plant pots at various points around our streets, especially for their spring and summer displays, that would further enhance the appearance of our lovely village.

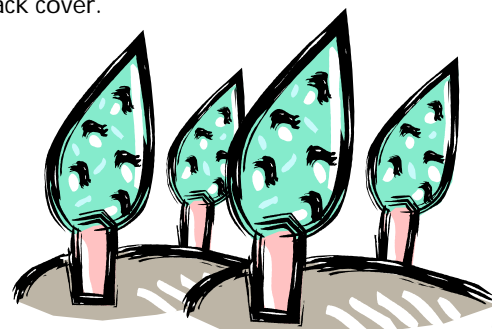
Parish councillors wondered whether any individual or family would be interested in taking on responsibility for looking after one pot sited outside or near their house. The Parish Council would provide the pot and pay for the plants.



*Tree Planting*

The Parish Council is about to embark on another round of tree planting to enhance our environment. Volunteers to help plant new trees will be needed.

Your comments on these plans or offers of help are welcomed - contact **Marion Judd** on 850 434 or call **Sue Totterdell** on 850 080 - or you can email them details on back cover.



## next meeting

The next meeting of the *Parish Council* will be held on the **10th March 2005**

at Hagbourne School, East Hagbourne.

Everyone is welcome, and the first 30 minutes of the meeting is used as a forum.

Anyone wanting a copy of the minutes or who has any queries should please contact the Parish Clerk - Ruth Webb on 851352

## twinning supper

The Didcot twinning association are holding a French themed social and bring & share supper on February 26th—for further details please contact Sue Totterdell.

## music hall entertainment

Hagbourne Village Hall Saturday 26th February Doors open at 6.30pm entertainment begins at 7.30pm

Licensed Bar

Tickets £7.50 – Senior Citizen £6.50 can be obtained from Keith Little 850094 or the Community Shop, East Hagbourne

## web site develops

The web site now has new features like telephone numbers and useful links plus district council information, recent newsletters and Didcot West info.

**We need contributions** for the Kids page, and village businesses might like a link to their website. Later there will be information on the village association, history group or farming pages, but these things need input, they won't happen all by themselves.

Please tell former residents of West Hagbourne etc about the website so they can keep in touch with village news and use email to publicise the newsletter to friends, former neighbours etc.

go to [www.westhagbourne.org](http://www.westhagbourne.org) to **contact the webmaster** and help make it a useful resource for all of us the parish.

## planning applications

The outcome of SODC planning department is still awaited on the following: Ivy Farm Barn conversion of a barn, Retrospective application for Thatch Cottage. And the major development of Didcot Great West Park which is now the subject of an appeal

The South East Regional Assembly **SEERA** has now published its consultation plan which feature Didcot as one of the key centres for housing development in the south of England.

your  
Parish  
Council

**Marion Judd** 850434  
mbjudd@supanet.com

**Keith Little** 850094  
keith.little@hagbourne.fsnet.co.uk

**Bernard Mead** 850783  
bernardmead@hagbourne.org

**Phil Taylor** 850182  
phil@philtaylor.demon.co.uk

**Sue Totterdell** 850080  
susan.totterdell@pharmacology.oxford.ac.uk

**Ruth Webb** 851352  
ruthannwebb@aol.com



the clerk

## The South East Plan – Your Shout!

South East England is an attractive place to live and work, but if we want it to stay that way we need to plan now to make sure our children and grandchildren can enjoy a good quality of life.

The South East England Regional Assembly has produced a draft document called the South East Plan - it includes important choices about development in our region to 2026. The Assembly is looking for public opinion on these choices from 24 January to 15 April 2005. During this period a questionnaire is being sent to every household in the region, so watch out for a leaflet giving you a chance to have 'Your Shout' soon. Your council will also be interested in your views and may be holding public events on the plan that you can attend.

Over the next 20 years, the region's population could grow by 900,000 increasing the demand for homes and jobs. Two thirds of this need for homes is expected to come from people already in the South East, rather than people moving from elsewhere. We need to plan ahead to balance the need for good jobs and successful businesses with the need to maintain a high quality environment. We must also ensure that new development goes hand in hand with infrastructure and services.



### What's the Plan about?

The key areas the Regional Assembly is seeking views on are jobs, homes, where to build, the countryside, essential services (eg hospitals, transport and schools), sharing success across the whole region, water, education and health.

With such a large region and so many topics there are going to be differing views, which is why it is important that people complete and return their questionnaire.

We need to reach the right balance for the region. If we have jobs without homes businesses may suffer from lack of staff. Building too few homes could lead to higher house prices and homelessness. However building more homes in areas without jobs may mean unemployment. More development also uses up valuable land and can also add to congestion and our environmental impact.

### What else does the Plan cover?

For three important subjects – transport, waste and energy – the Regional Assembly has already agreed plans to 2016 with Government following earlier consultation.

**For more information see:**  
[www.southeast-ra.gov.uk/southeastplan](http://www.southeast-ra.gov.uk/southeastplan)

**Or phone our 24-hour information line on tel:**  
**01483 555 208.**